

**Panasonic**



**SHARP, BRIGHT,  
LARGE-SCREEN IMAGES**

SOLID RELIABILITY AND SYSTEM EXPANDABILITY

LCD Projectors  
PT-EX16K  
PT-EX12K

# OUTSTANDING PERFORMANCE FOR LARGE-SPACE VIEWING

A 2-model lineup with the High-Brightness, 16,000-lm PT-EX16K and 13,000-lm PT-EX12K.

## BALANCING THE FACTORS REQUIRED TO FILL LARGE SPACES WITH BREATHTAKING IMAGES.

The PT-EX16K and PT-EX12K render crisp, clear, large-screen images with the remarkable brightness of 16,000 lm and 13,000 lm, respectively. Pure Colour Control, which independently controls yellow brightness to improve colour reproduction, attains this superb brightness with optimal colouring. And the Multi-Lamp Optical System maintains high reliability. System expansion functions include horizontal/vertical lens shift and a Multi-Screen Support System. These and other features enable flexible installation for a wide variety of applications.



**PT-EX16KE**

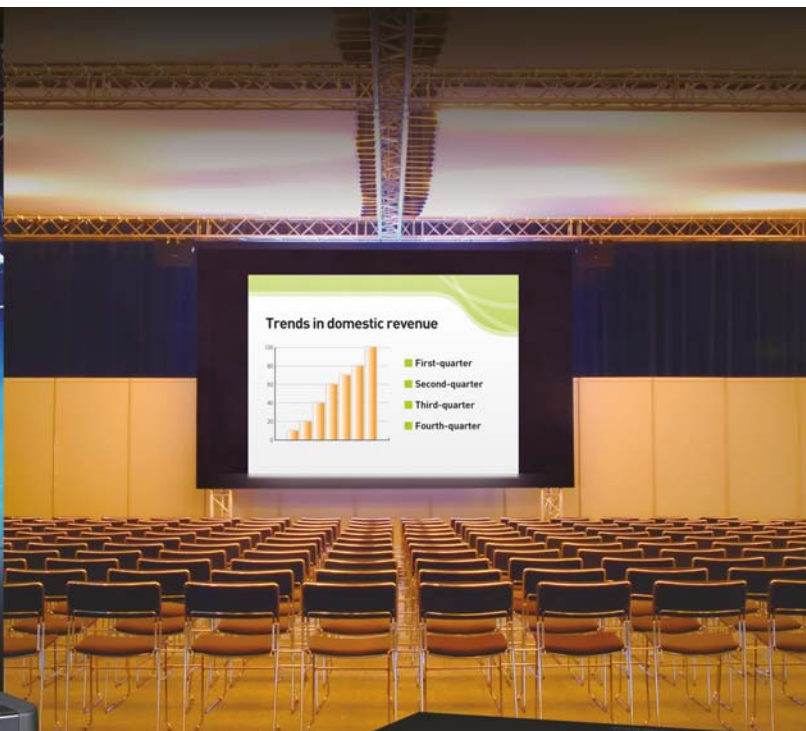
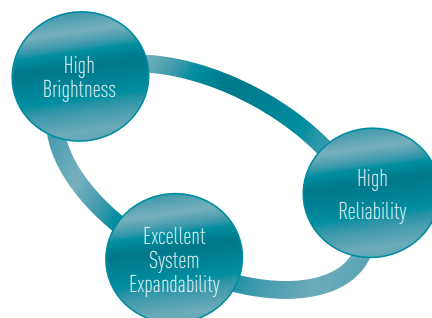
16,000 lm

XGA

**PT-EX12KE**

13,000 lm

XGA



## BRIGHT, VIBRANT LARGE-SCREEN IMAGES

EX-16K

### A Full 16,000 lm of Brightness and 2,500:1 Contrast

The 4-Lamp Optical System uses high-output, 380 W UHM lamps to deliver remarkable 16,000-lm brightness. And the contrast ratio is a high 2,500:1, to ensure bright, crisp, large-screen projection.

EX-12K

### High 13,000-lm Brightness and 4,000:1 Contrast

The 2-Lamp Optical System uses high-output, 380 W UHM lamps to produce high brightness of 13,000 lm. Contrast is also high at 4,000:1. Images are sharp and crisp.

EX-16K

EX-12K

### Full 10-Bit Image Processing System

The use of a full 10-bit image processing system provides smooth tonal expression. For example, skin tones appear natural and true to life.

EX-16K

EX-12K

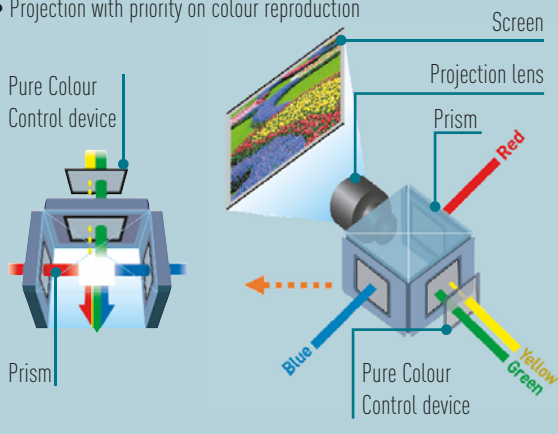
### Excellent Colours with Pure Colour Control

It is inherently difficult for LCD projectors to attain both high brightness and superb colour reproduction. For this reason, in addition to the three conventional LCD panels that control the light intensity for the red, blue and green primary colours, the PT-EX16K/EX12K also features a Pure Colour Control function that independently controls the light intensity of yellow colouring. This provides rich overall colour expression while maintaining brightness.

#### Basic Concept of the Pure Colour Control

Independent control of yellow

- Projection with priority on brightness
- Projection with priority on colour reproduction



\*1 The values above are maximum values when they are used in cycles of being turned on for 2 hours and off for 0.25 hours. When the lamps are turned on and off more frequently, the lamp replacement cycle is shortened. The usage environment affects the lamp replacement cycle.

\*2 With the lamp power set to Normal. The usage environment affects the duration of the filter.

\*3 Electrostatic filters.

\*4 When washing with water, please follow the procedures listed in the operating instructions. Also, we recommend replacing the filter with a new one after it has been washed and reused twice. If the filter is not sufficiently clean after washing, replace it with a new one.

## HIGH RELIABILITY FOR LONG-TIME USE

EX-16K

EX-12K

### The Multi-Lamp Optical System Enables Stable, Extended Operation

Even if one lamp goes out during use, the other lamps continue, so projection is not interrupted. Lamp Relay mode also allows long-time, continuous operation.

Brightness and Lamp Replacement Cycle Guideline.

Lamp	Brightness (lm)	Maximum lamp replacement cycle (hours) <sup>*1</sup>
Four lamps (Normal)	16,000	2,000
Four lamps (Eco1 or Eco2)	12,320	3,000
Two lamps (Normal)	8,000	4,000
Two lamps (Eco1 or Eco2)	6,160	6,000

PT-EX16K

Lamp	Brightness (lm)	Maximum lamp replacement cycle (hours) <sup>*1</sup>
Two lamps (Normal)	13,000	2,000
Two lamps (Eco1 or Eco2)	10,010	3,000
One lamp (Normal)	6,500	4,000
One lamp (Eco1 or Eco2)	5,005	6,000

PT-EX12K

EX-16K

EX-12K

### Highly Durable Optical Engine Ensures Excellent Long-Time Image Quality

The LCD panels and polarizers inside the LCD projector's optical block tend to degrade over time. Their degradation adversely affects image quality. Inorganic materials are used for the LCD panels, and for the polarizers that are prone to degradation, to resist time-related changes in the optical block, therefore achieving a replacement cycle of up to 10,000 hours.

EX-16K

### Adverse Dust Effects Prevented by a Long-Lasting Air Filter

The use of a large pleated air filter has made it possible to achieve a replacement cycle of up to 5,000 hours<sup>\*2</sup>. This greatly reduces maintenance hassles. The filter is also replaced from the front, so there is no need to detach the projector from its mounting bracket in ceiling-mounted applications.



EX-12K

### Long-Lasting Eco Filter with User-Friendly Maintenance

The PT-EX12K features the Eco Filter, which efficiently captures dust and requires no replacement for up to 12,000 hours<sup>\*2</sup>. It consists of Micro Cut Filters<sup>\*3</sup> that use an ion effect to collect extremely small dust particles. These large-surface, pleated filters have a high dust collecting performance. In addition to its long replacement cycle, the Eco Filter can be washed with water<sup>\*4</sup> for repeated use, further increasing its ecological performance. The Eco Filter can also be removed through the top panel of the projector, enabling filter replacement on ceiling-mounted projectors without having to detach the projector from its mounting bracket.

EX-16K

### Optional Smoke Cut Filter Provides Protection from Fine Smoke Particles

The projector can be equipped with an optional Smoke Cut Filter ET-SFE16 to prevent the entry of not only dust but also fine smoke particles, such as those used for special effects at events and stage performances.



# EXCELLENT SYSTEM EXPANDABILITY FOR VERSATILE INSTALLATION

EX-16K EX-12K

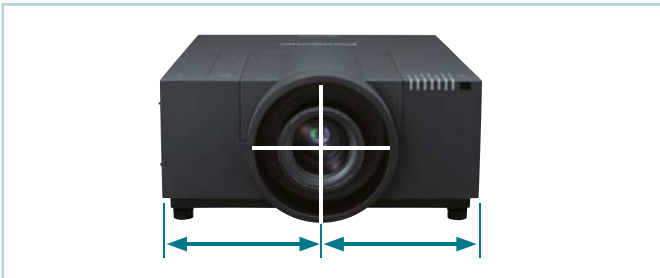
## The Horizontal/Vertical Lens Shift Function and a Variety of Lenses

Both zooming and focusing can be done by remote control. The wide adjustment range of the powered horizontal/vertical lens shift function assures convenience and versatility during installation. You can also choose from a wide variety of lenses, from short or long focus zoom lenses to a fixed focus lens for rear projection. This makes it possible to install the projector in a variety of locations.

EX-12K

## Lens-centered Design

A lens-centered, symmetrical design provides ease of installation, eliminating the need for any special considerations when planning the installation site.



EX-16K EX-12K

## Flexible Installation

The projector can be rotated 360° vertically for flexible installation. This allows projection from directly above or below, for exciting visual possibilities in art galleries, theatres and showrooms.



EX-16K EX-12K

## Corner Keystone Correction Enables Angled Projection

All you need to do is designate four points as the corners of the projected image, and this function automatically carries out horizontal and vertical keystone correction.

EX-16K EX-12K

## Multi-Screen Support System Seamlessly Connects Multiple Screens

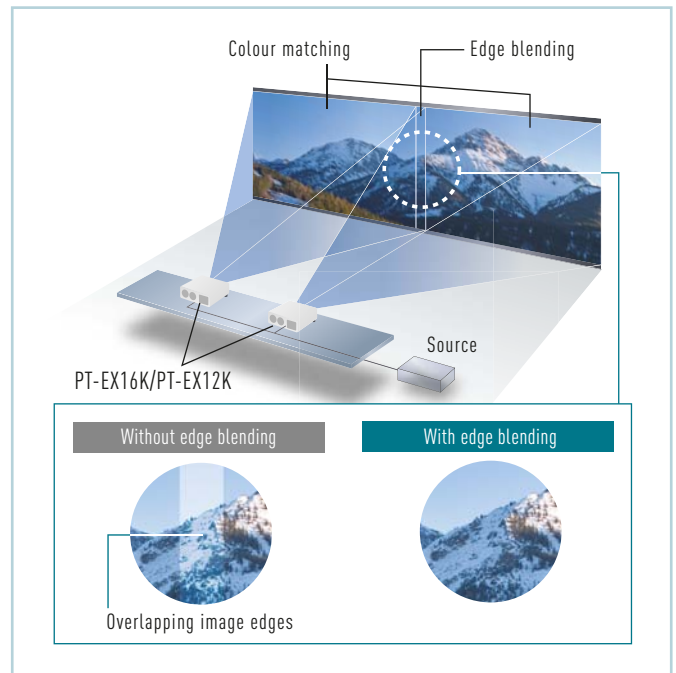
The Multi-Screen Support System optimally adjusts multiple screens: Edge blending, colour matching.

### Edge Blending

The edges of adjacent screens can be blended and their luminance controlled.

### Colour Matching

This function corrects for slight variations in the colour reproduction range of individual projectors.



EX-16K EX-12K

## Versatile Interfaces and Illuminated Terminals and Control Panel

The wide-ranging terminals include 2 sets of RGB inputs<sup>\*5</sup>, an HDMI input, and a DVI-D input. Mounting the optional Interface Board ET-MD16SD1 also accommodates HD/SD-SDI signal input. The terminal connection area is LED illuminated, and a backlight is provided for the control panel buttons, ensuring smooth and easy operation in the dark.

\* Featured image is PT-EX12K. The serial input terminal of the PT-EX16K is a male type. The printings on the side of PT-EX16K differ slightly from the picture shown.



EX-16K

EX-12K

## Mechanical Shutter for a Total Screen Blackout

The Mechanical Shutter lets you mechanically block the light to completely blackout the screen, and prevents light leakage from the lens. When closing the shutter, the projection image gradually fades out, then gradually fades in when opening, which brings more attractive stage effects.

EX-16K

EX-12K

## Easy Remote Control and Observation

A web browser on a computer connected through a wired LAN system lets you remotely operate projectors and check their status. An e-mail messaging function can also notify you when a lamp needs replacement, and indicate the overall projector status. In addition, Multi Projector Monitoring and Control Software is available for monitoring and controlling multiple Panasonic projectors from a single PC. The wired LAN terminal is compatible with PJLink™ (class1), an open protocol that is used by many manufacturers, to enable integrated control of systems that contain different brands of projectors.

**PJLink™**



EX-16K

## Robust Carrying Handles

An iron base plate is mounted to the bottom of the main unit. Also, robust carrying handles attached to the base plate are designed for easy carrying of the projector.



EX-16K

EX-12K

## Top-Panel Lamp Replacement Simplifies Maintenance

The lamp can be reached through the top panel for easy replacement. This eliminates the need to detach the projector from its mounting bracket in ceiling-mounted applications and greatly simplifies maintenance.



\* Featured Image: PT-EX12K.

EX-16K

EX-12K

## Direct Power Off

The cooling fan continues to operate even when the main power switch is turned off after projection is finished. This also allows the power to be turned off by directly switching off the room's main breaker for systems, such as ceiling mounted systems, where the main power switch cannot be reached.

EX-16K

EX-12K

## A Remote Control ID

Projector identification system for remote control allocation of up to 64 projectors allows simultaneous or individual control when multiple projectors are used.



\* Featured Image: PT-EX12K.

EX-16K

EX-12K

## Effective Theft Prevention with the Startup Logo\*<sup>6</sup>

You can change the default Panasonic logo to any logo you want, such as your company's logo for example.

## Ecology-conscious Design

- Panasonic works from every angle to minimise environmental impact in the product design, production and delivery processes, and in the performance of the product during its life cycle. The PT-EX16K/EX12K projectors reflect the following ecological considerations.
- No halogenated flame retardants are used in the cabinet.
- Lead-free glass is used for the lens.
- Lamp power switching further reduces power consumption.
- RoHS compliant

<sup>5</sup> One set supports YPbPr (YCaCr) signals.

<sup>6</sup> The included Logo Transfer Software is required to upload a new logo.

## OPTIONAL ACCESSORIES

### ET-PKE16H

Ceiling mount bracket for high ceilings\*



### ET-PKE16S

Ceiling mount bracket for low ceilings\*



\* This product is used together with an optional bracket assembly (sold separately).

### ET-MD16SD1

Interface board for HD/SD-SDI input



## For the PT-EX12K only

### ET-PKE12B

Bracket assembly



### ET-LAE12

Replacement lamp unit



### ET-RFE12

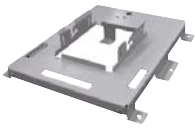
Replacement filter unit



## For the PT-EX16K only

### ET-PKE16B

Bracket assembly



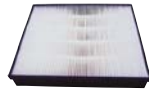
### ET-SFE16

Smoke cut filter unit



### ET-SRE16

Replacement smoke cut filter for the ET-SFE16



### ET-LAE16

Replacement lamp unit

### ET-RFE16

Replacement filter unit

## Zoom lens

### ET-ELW06

(1.2 – 1.5:1)



### ET-ELW02

(1.4 – 1.8:1)



### ET-ELW04

(1.5 – 2.0:1)



### ET-ELS02

(2.0 – 2.6:1)



## Fixed-focus lens

### ET-ELW03

(0.8:1)



### ET-ELS03

(2.6 – 3.5:1)



### ET-ELM01

(3.5 – 4.5:1)



### ET-ELT02

(4.4 – 6.2:1)

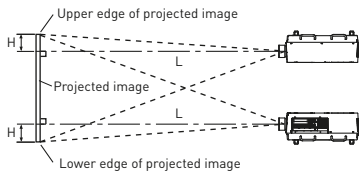


### ET-ELT03

(6.3 – 9.0:1)

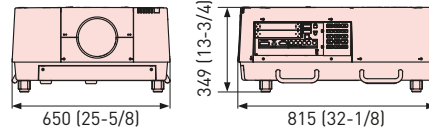


# PROJECTION DISTANCE

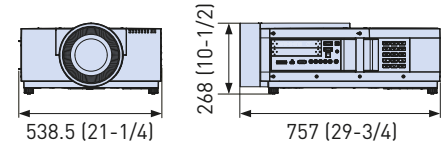


# DIMENSIONS UNIT: MM (INCH)

**PT-EX16K**



**PT-EX12K**



UNIT: MM (INCH)																				
Diagonal image size	Projection distance (L)																	Height from the edge of screen to center of lens (H)		
	ET-ELW06		ET-ELW02		ET-ELW04		ET-ELS02		ET-ELS03		ET-ELM01		ET-ELT02		ET-ELT03		ET-ELW03	ET-ELS02	ET-ELW03	
	1.2 – 1.5:1		1.4 – 1.8:1		1.5 – 2.0:1		2.0 – 2.6:1		2.6 – 3.5:1		3.5 – 4.5:1		4.4 – 6.2:1		6.3 – 9.0:1		0.8:1			
Throw ratio (4.3 aspect ratio)	min. (wide)	max. (tele)	min. (wide)	max. (tele)	min. (wide)	max. (tele)	min. (wide)	max. (tele)	min. (wide)	max. (tele)	min. (wide)	max. (tele)	min. (wide)	max. (tele)	min. (wide)	max. (tele)	fixed	ET-ELW06/ELW02/ELW04/ELS03/ELM01/ELT02/ELT03	ET-ELS02	ET-ELW03
1.02 (40°)	0.91 (3.0)	1.17 (3.8)	1.07 (3.5)	1.42 (4.7)	1.15 (3.8)	1.56 (5.1)	1.48 (4.9)	1.99 (6.5)	-	-	2.87 (9.4)	3.69 (12.1)	3.75 (12.3)	5.11 (16.8)	5.27 (17.3)	7.58 (24.9)	0.60 (2.0)	0.07-0.55 (0.2-1.8)	0-0.61 (0-2.0)	0.31 (1.0)
1.27 (50°)	1.16 (3.8)	1.49 (4.9)	1.36 (4.5)	1.80 (5.9)	1.47 (4.8)	1.98 (6.5)	1.90 (6.2)	2.53 (8.3)	-	-	3.56 (11.7)	4.58 (15.0)	4.63 (15.2)	6.35 (20.8)	6.50 (21.3)	9.38 (30.8)	0.77 (2.5)	0.09-0.68 (0.3-2.2)	0-0.77 (0-2.5)	0.39 (1.3)
1.52 (60°)	1.40 (4.6)	1.81 (5.9)	1.65 (5.4)	2.18 (7.2)	1.79 (5.9)	2.40 (7.9)	2.32 (7.6)	3.08 (10.1)	-	-	4.26 (14.0)	5.48 (18.0)	5.51 (18.1)	7.58 (24.9)	7.73 (25.4)	11.19 (36.7)	0.94 (3.1)	0.11-0.82 (0.4-2.7)	0-0.92 (0-3.0)	0.46 (1.5)
1.78 (70°)	1.65 (5.4)	2.12 (7.0)	1.94 (6.4)	2.56 (8.4)	2.12 (7.0)	2.82 (9.3)	2.74 (9.0)	3.63 (11.9)	-	-	4.95 (16.2)	6.38 (20.9)	6.39 (21.0)	8.82 (28.9)	8.96 (29.4)	13.00 (42.7)	1.10 (3.6)	0.12-0.95 (0.4-3.1)	0-1.07 (0-3.5)	0.54 (1.8)
2.03 (80°)	1.89 (6.2)	2.44 (8.0)	2.23 (7.3)	2.93 (9.6)	2.44 (8.0)	3.24 (10.6)	3.16 (10.4)	4.18 (13.7)	-	-	5.65 (18.5)	7.28 (23.9)	7.27 (23.9)	10.05 (33.0)	10.19 (33.4)	14.80 (48.6)	1.27 (4.2)	0.14-1.09 (0.5-3.6)	0-1.22 (0-4.0)	0.61 (2.0)
2.29 (90°)	2.13 (7.0)	2.76 (9.1)	2.52 (8.3)	3.31 (10.9)	2.76 (9.1)	3.66 (12.0)	3.58 (11.7)	4.72 (15.5)	-	-	6.34 (20.8)	8.18 (26.8)	8.14 (26.7)	11.28 (37.0)	11.42 (37.5)	16.61 (54.5)	1.44 (4.7)	0.16-1.23 (0.5-4.0)	0-1.38 (0-4.5)	0.69 (2.3)
2.54 (100°)	2.38 (7.8)	3.08 (10.1)	2.81 (9.2)	3.69 (12.1)	3.08 (10.1)	4.08 (13.4)	4.00 (13.1)	5.27 (17.3)	5.22 (17.1)	7.10 (23.3)	7.04 (23.1)	9.08 (29.8)	9.02 (29.6)	12.52 (41.1)	12.65 (41.5)	18.42 (60.4)	1.60 (5.2)	0.17-1.36 (0.6-4.5)	0-1.53 (0-5.0)	0.77 (2.5)
3.05 (120°)	2.87 (9.4)	3.71 (12.2)	3.39 (11.1)	4.44 (14.6)	3.72 (12.2)	4.92 (16.1)	4.85 (15.9)	6.36 (20.9)	6.30 (20.7)	8.56 (28.1)	8.42 (27.6)	10.88 (35.7)	10.78 (35.4)	14.99 (49.2)	15.11 (49.6)	22.03 (72.3)	1.94 (6.4)	0.21-1.63 (0.7-5.3)	0-1.83 (0-6.0)	0.92 (3.0)
3.81 (150°)	3.60 (11.8)	4.66 (15.3)	4.26 (14.0)	5.57 (18.3)	4.69 (15.4)	6.18 (20.3)	6.11 (20.0)	8.00 (26.2)	7.92 (26.0)	10.73 (35.2)	10.51 (34.5)	13.57 (44.5)	13.42 (44.0)	18.69 (61.3)	18.80 (61.7)	27.45 (90.1)	2.44 (8.0)	0.26-2.04 (0.9-6.7)	0-2.29 (0-7.5)	1.15 (3.8)
5.08 (200°)	4.82 (15.8)	6.25 (20.5)	5.71 (18.7)	7.46 (24.5)	6.29 (20.6)	8.28 (27.2)	8.21 (26.9)	10.74 (35.2)	10.61 (34.8)	14.36 (47.1)	13.98 (45.9)	18.07 (59.3)	17.82 (58.5)	24.86 (81.6)	24.94 (81.8)	36.49 (119.7)	3.27 (10.7)	0.34-2.72 (1.1-8.9)	0-3.05 (0-10.0)	1.53 (5.0)
6.35 (250°)	6.04 (19.8)	7.83 (25.7)	7.16 (23.5)	9.35 (30.7)	7.90 (25.9)	10.38 (34.1)	10.32 (33.9)	13.47 (44.2)	13.31 (43.7)	18.00 (59.1)	17.45 (57.3)	22.56 (74.0)	22.22 (72.9)	31.03 (101.8)	31.09 (102.0)	45.52 (149.3)	4.10 (13.5)	0.42-3.40 (1.4-11.2)	0-3.81 (0-12.5)	1.91 (6.3)
7.62 (300°)	7.26 (23.8)	9.42 (30.9)	8.61 (28.2)	11.23 (36.8)	9.51 (31.2)	12.48 (40.9)	12.42 (40.7)	16.21 (53.2)	16.00 (52.5)	21.63 (71.0)	20.92 (68.6)	27.05 (88.7)	26.62 (87.3)	37.20 (122.0)	37.24 (122.2)	54.55 (179.0)	4.94 (16.2)	0.51-4.07 (1.7-13.4)	0-4.58 (0-15.0)	2.29 (7.5)
10.16 (400°)	9.69 (31.8)	12.59 (41.3)	11.51 (37.8)	15.00 (49.2)	12.72 (41.7)	16.68 (54.7)	16.63 (54.6)	21.68 (71.1)	21.39 (70.2)	28.89 (94.8)	27.87 (91.4)	36.04 (118.2)	35.42 (116.2)	49.54 (162.5)	49.53 (162.5)	72.62 (238.3)	6.60 (21.7)	0.68-5.43 (2.2-17.8)	0-6.10 (0-20.0)	3.05 (10.0)
12.70 (500°)	12.13 (39.8)	15.76 (51.7)	14.41 (47.3)	18.78 (61.6)	15.94 (52.3)	20.88 (68.5)	20.84 (68.4)	27.15 (89.1)	26.79 (87.9)	36.15 (118.6)	34.8 (114.2)	45.03 (147.7)	44.22 (145.1)	61.88 (203.0)	61.83 (202.9)	90.69 (297.5)	8.27 (27.1)	0.84-6.79 (2.8-22.3)	0-7.62 (0-25.0)	3.81 (12.5)
15.24 (600°)	14.57 (47.8)	18.93 (62.1)	17.30 (56.8)	22.55 (74.0)	19.15 (62.8)	25.07 (82.3)	25.05 (82.2)	32.61 (107.0)	32.18 (105.6)	43.41 (142.4)	41.76 (137.0)	54.01 (177.2)	53.02 (174.0)	74.22 (243.5)	74.12 (243.2)	108.76 (356.8)	9.94 (32.6)	1.01-8.14 (3.3-26.7)	0-9.15 (0-30.0)	4.57 (15.0)

# SPECIFICATIONS

MODEL		PT-EX16K	PT-EX12K
Power supply		200-240 V AC, 50/60 Hz	100-240 V AC, 50/60 Hz
Power consumption		1,850 W (18 W with standby mode)	940 W (17 W with standby mode)
LCD panel	Panel size	46 mm (1.8 inches) diagonal (4:3 aspect ratio)	
	Display method	Transparent LCD panel (x 3, R/G/B)	
	Pixels	786,432 (1,024 x 768) x 3, total of 2,359,296 pixels	
	Pixel configuration	Stripe	
Pure colour control device		1	
Lens		Optional	
Lamp		380 W x 4, lamp replacement cycle (lamp power: Normal/Eco1, Eco2): 2,000 hours/3,000 hours*1	380 W x 2, lamp replacement cycle (lamp power: Normal/Eco1, Eco2): 2,000 hours/3,000 hours*1
Screen size (diagonal)		1.02–15.24 m (40–600 inches) (2.54–15.24 m [100–600 inches] with the ET-ELS03), 4:3 aspect ratio	
Brightness <sup>2</sup>		16,000 lm (4-lamps, lamp power: Auto/Normal, Optional lens: ET-ELS03)	13,000 lm (2-lamps, lamp power: Auto/Normal, Optional lens: ET-ELS03)
Centre-to-corner uniformity <sup>3</sup>		90 %	
Contrast <sup>2</sup>		2,500:1 (full on/full off, 4-lamps, lamp power: Auto)	4,000:1 (full on/full off, 2-lamps, lamp power: Auto)
Resolution		1,024 x 768 pixels (Input signals that exceed this resolution will be converted to 1,024 x 768 pixels.)	
Scanning frequency	HDMI/DVI-D	Horizontal: 26–80 kHz, vertical: 23–85 Hz, dot clock: 162 MHz or lower	
	RGB (analog)	fh: 15–120 kHz, fv: 48–120 Hz Dot clock: 230 MHz or lower (Signals exceeding the dot clock rate of 165 MHz are downsampled.)	
	YPbPr (YCaCb)	fh: 15.75 kHz, fv: 60 Hz [480i (525i)] fh: 31.25 kHz, fv: 50 Hz [576p (625p)] fh: 33.75 kHz, fv: 60 Hz [1035/60i] fh: 28.13 kHz, fv: 25 Hz [1080/25p] fh: 27.00 kHz, fv: 48 Hz [1080/24sF] fh: 67.50 kHz, fv: 60 Hz [1080/60p]	fh: 15.63 kHz, fv: 50 Hz [576i (625i)] fh: 45.00 kHz, fv: 60 Hz [720 (750)/60p] fh: 33.75 kHz, fv: 60 Hz [1080 (1125)/60i] fh: 33.75 kHz, fv: 60 Hz [1080 (1125)/60i] fh: 33.75 kHz, fv: 30 Hz [1080/30p] fh: 56.25 kHz, fv: 50 Hz [1080/50p]
Video/S-Video	fh: 15.75 kHz, fv: 60 Hz [NTSC/NTSC4.43/PAL-M/PAL60], fh: 15.63 kHz, fv: 50 Hz [PAL/PAL-N/SECAM]		
Optical axis shift		With the ET-ELW06: vertical ±39% from center of screen (powered)*3 With the ET-ELW02/ELW04/ELS03/ELM01/ELT02/ELT03: vertical ±39%, horizontal ±10% from center of screen (powered) With the ET-ELS02: vertical ±50%, horizontal ±10% from center of screen (powered) With the ET-ELW03: the optical lens shift function cannot be used.	
Keystone correction range		Vertical: Maximum ±40°, Horizontal: Maximum ±40° (with XGA signal input, for vertical/horizontal correction only, Optional lens: ET-ELS03)	
Installation		Ceiling/floor, front/rear	
Terminals	INPUT1	DVI-D 24-pin x 1 (DVI 1.0 compliant, compatible with HDCP, compatible with single link only), 480p, 576p, 720/60p, 720/50p, 1080/60i, 1080/50i, 1035/60i, 1080/24p, 1080/24sF, 1080/25p, 1080/25sF, 1080/30p, 1080/30sF, 1080/60p, 1080/50p, VGA (640 x 480)–WUXGA (1,920 x 1,200)*4, compatible with non-interlaced signals only, dot clock: 25–162 MHz	
		HDMI IN	HDMI 19-pin x 1 (compatible with HDCP, compatible with Deep Color), 480p, 576p, 720/60p, 720/50p, 1080/60i, 1080/50i, 1035/60i, 1080/24p, 1080/24sF, 1080/25p, 1080/25sF, 1080/30p, 1080/30sF, 1080/60p, 1080/50p, VGA (640 x 480)–WUXGA (1,920 x 1,200)*4, compatible with non-interlaced signals only, dot clock: 25–162 MHz
		ANALOG IN	D-sub HD 15-pin (female) x 1 (RGB x 1)
	INPUT2	RGB 5BNC IN/VIDEO IN	BNC x 5 (RGB/YPbPr/YCaCb x 1), shared with VIDEO IN (BNC x 1) (composite video)
		S-VIDEO IN	Mini DIN 4-pin x 1 (S-Video)
	INPUT3		Optional interface board slot. When the ET-MD16SD1 is installed, SERIAL IN (SDI IN 1/2): BNC x 2 (SD-SDI signal/single link HD-SDI signal) SD-SDI signal (YCBCR 4:2:2 10-BIT): 480i, 576i (SMPT 259M-C compliant) Single-link HD-SDI signal (YPbPr 4:2:2 10-BIT): 720/50p, 720/60p, 1035/60i, 1080/50i, 1080/60i, 1080/25p, 1080/25sF, 1080/24p, 1080/24sF, 1080/30p, 1080/30sF (SMPT 292M compliant) SERIAL OUT (SDI OUT): BNC x 1 (active through)
		SERIAL IN	D-sub 9-pin (male) x 1 for external control
		SERIAL OUT	D-sub 9-pin (male) x 1 for link control
		REMOTE IN	M3 Jack x 1 (for wired remote control)
		LAN	RJ-45 x 1 (for network connection, 100Base-TX/10Base-T, compliant with PLink™ [class1])
	USB	USB type-B (USB connector) x 1*5	
Cabinet materials		Molded plastic	
Dimensions (W x H x D)		650 x 349 x 815 mm (25.6" x 13.7" x 32.1") (with legs at shortest position, optional lens not included)	538.5 x 268 x 757 mm (21.2" x 10.6" x 29.8") (with legs at shortest position, optional lens not included)
Weight		Approximately 46.5 kg (102.5 lbs) (optional lens not included)	Approximately 28 kg (61.7 lbs) (optional lens not included)
Noise level		51 dB (lamp power: Normal/Eco2), 48 dB (lamp power: Eco1)	42 dB (lamp power: Normal/Eco2), 39 dB (lamp power: Eco1)
Operating temperature		5°C–40°C [41°F–104°F] (less than 1,800 m [5,906 ft] above sea level), 5°C–30°C [41°F–86°F] (between 1,800 m and 2,700 m [5,906 ft to 8,858 ft] above sea level)	0°C–40°C [32°F–104°F] (less than 1,400 m [4,593 ft] above sea level), 0°C–30°C [32°F–86°F] (between 1,400 m and 2,700 m [4,593 ft to 8,858 ft] above sea level)
Operating humidity		20–80 % (no condensation)	
Supplied accessories		Power cord x2, power cord holder/power cord cover x1 set, wireless/wired remote control unit, batteries (AAA/R03/LR03 type x 2), VGA cable x 1, software CD-ROM (Logo Transfer Software, Multi Projector Monitoring & Control Software, Real Color Manager Pro.), lens attachment x1 set, lens lock lever fixing bracket x1 set, lightshielding plate x3 sets, spacer x1 set, cable tie x3	

\*1 The values given for the recommended lamp replacement cycles are maximum.

\*2 Measurement, measuring conditions, and method of notation all comply with ISO 21118 international standards.

\*3 The ET-ELW06 is equipped with only vertical optical axis shift.

\*4 Compliant with VESA CMT-RB.

\*5 This port is for use by service personnel only. The USB interface may not operate with all USB compatible equipment.

For more information about Panasonic projectors  
please visit: [business.panasonic.co.uk/visual-system](http://business.panasonic.co.uk/visual-system)  
Facebook: [facebook.com/PanasonicVisualSolutionsEU](https://facebook.com/PanasonicVisualSolutionsEU)  
Twitter: [twitter.com/PanasonicVisual](https://twitter.com/PanasonicVisual)

Weights and dimensions shown are approximate. Specifications and appearance are subject to change without notice. The projection distances and throw ratios given in this brochure are for use only as guidelines. For more detailed information, please consult the dealer from whom you are purchasing the product. The PLink trademark is an application trademark in Japan, the United States, and other countries and regions or registered trademarks. All other trademarks are the property of their respective trademark owners. Projection images simulated.

© 2012 Panasonic Corporation. All rights reserved.

# Panasonic