

Installation Guide

TH-55LFE8

Content of box:

1 x Touch overlay

4 x Brackets

14 x Phillips screws

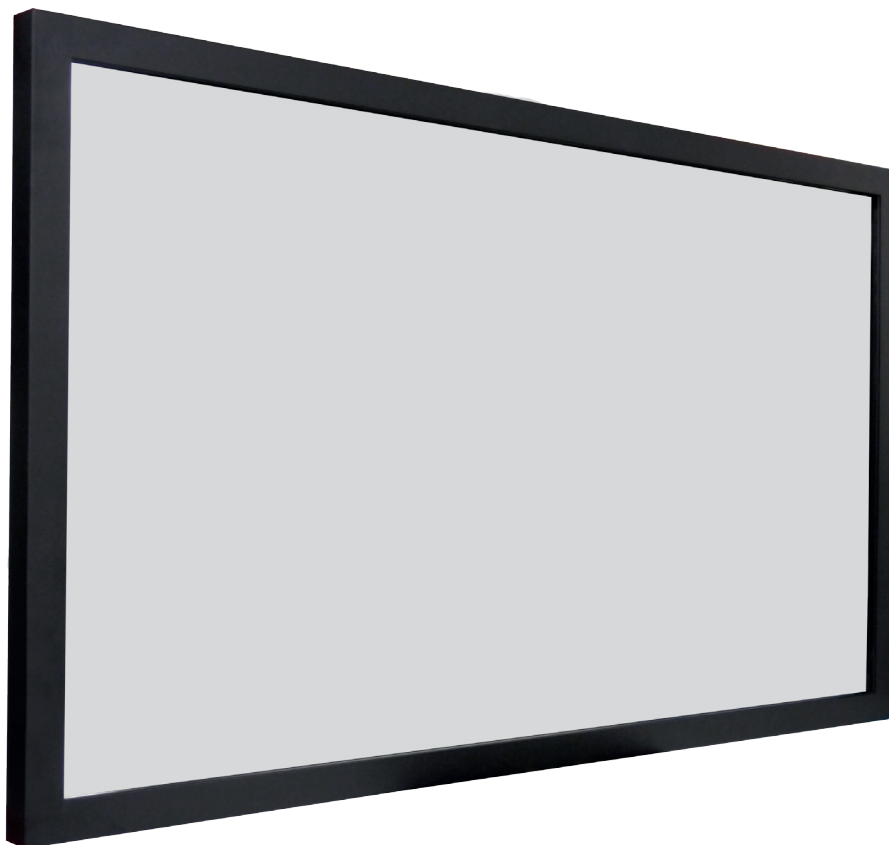


Table of Contents

Introduction	2
Capabilities	3
Unpacking the Unit	4
Installation Instructions	5 - 6
USB Installation	7
Operating the Touch Screen	8
Cleaning the Touch Screen	9
Troubleshooting	9 - 11
FAQ	12 - 13

Terminology

Monitor: refers to the Panasonic TH-55LFE8 LCD screen.
Sometimes referred to as “display screen.”

Touch overlay: refers to the PresTop overlay that fits onto the monitor and provides the touch functionality.

Touch screen: refers to the combined unit—the monitor and the touch overlay.

Introduction

Congratulations on your purchase of a PresTop PT Touch Overlay. This product turns a Panasonic TH-55LFE8 large-format display, into an interactive display. You can control a computer application simply by touching the screen.

The PT Touch Overlay can be connected to the computer via USB cable, thus providing maximum versatility. The USB is HID compliant, providing true plug-and-play operation, just like a USB mouse.

The standard PT Touch Overlay is powered via the USB interface from the computer and hence does not require a separate power supply.

The main steps to install the PT Touch Overlay are as follows:

- Unpack the PT Touch Overlay.
- Unpack the screen.
- Fit the touch overlay to the display screen.
- Connect all the cables.

Capabilities

The following table shows the touch functionality provided by a PresTop PT Touch Overlay with different operating systems.

	XP/ 2000 /Vista	Windows 7		Windows 8 ¹⁾	Windows 10 ¹⁾	Linux	Mac OS X	Android
		Starter Home Basic	Home Premium Professional					
Single touch	Yes	Yes	Yes	Yes	Yes	Yes	Yes	Yes ⁴⁾
multi-touch	No	No	Yes	Yes	Yes	Yes ²⁾	No ³⁾	Yes ⁴⁾

- 1) Windows must be non OEM version.
- 2) Kernel 3.0+, cs support multitouch by adding patch.
Kernel 3.5+, HID compliance support multitouch.
- 3) Gesture support on request.
- 4) Kernel 2.6.32+, we can provide patch
Kernel 3.5+, HID compliance support Multi-touch

Multi-Touch and Gestures on Windows 7, 8, 10

The latest operating systems from Microsoft and other vendors support multi-touch features such as two-touch gestures. The PresTop PT Touch Overlay is multi-touch capable and supports gestures.

Unpacking the Unit

Unpack the unit, taking care not to damage the surfaces. Check the product for any signs of damage in transit.

Installation Requirements

Once you have unpacked the unit, make sure you have the following:

- The display monitor that you are going to mount the Touch Overlay onto.
- The computer that runs your software application, including the cable that connects the computer to the display screen.

Safety Notes

- The touch overlay contains glass that can add significant weight, especially for large-format displays. It is essential that the monitor's stand is strong and stable enough to support the combined weight of the touch overlay and monitor.
- For a large screen, you need two people to install the touch overlay safely.

Parts of the Touch Overlay

The PresTop PT Touch Overlay consists of metal frame, in this frame is the touch and glass.

The overlay is secured with brackets on the monitor, which are screwed in the frame.



Installation Instructions

Depending on the size the installation normally requires two people.

Preparation

1. After unpacking and checking for any damage, place the Touch Overlay face down on a clean, soft surface, such as a clean carpet.
2. Make sure the back surface of the glass is clean. (See for instructions page 9).
3. Unpack the monitor.
4. Make sure that the monitor is clean.

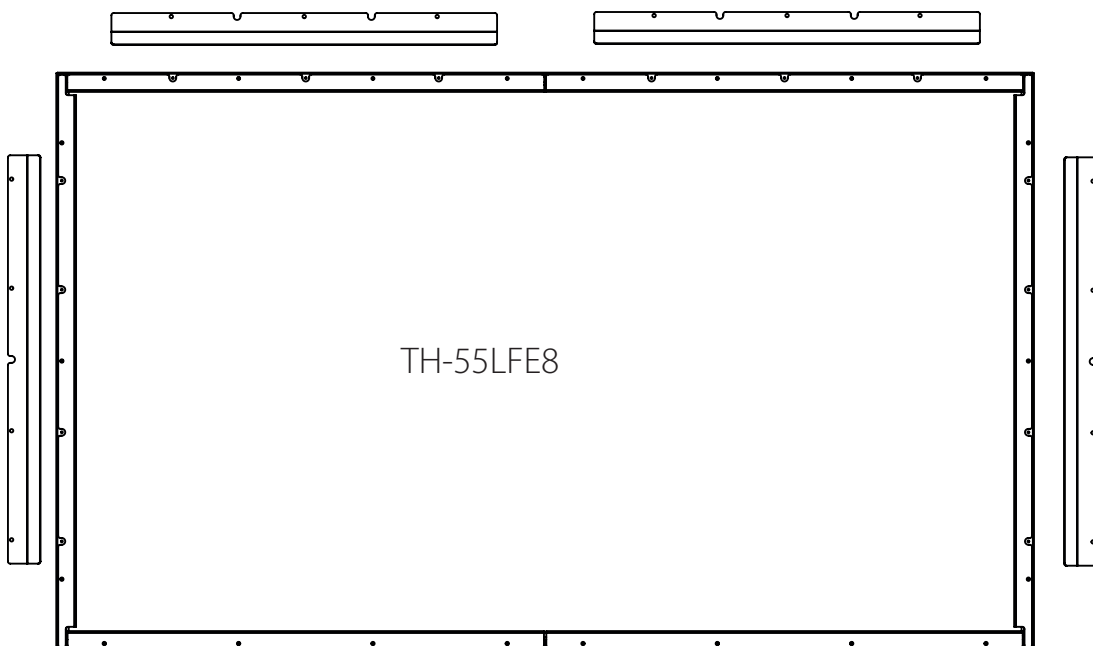
Installing on the monitor

Unpack the touch overlay and place this, face down, on a flat and clean soft surface.

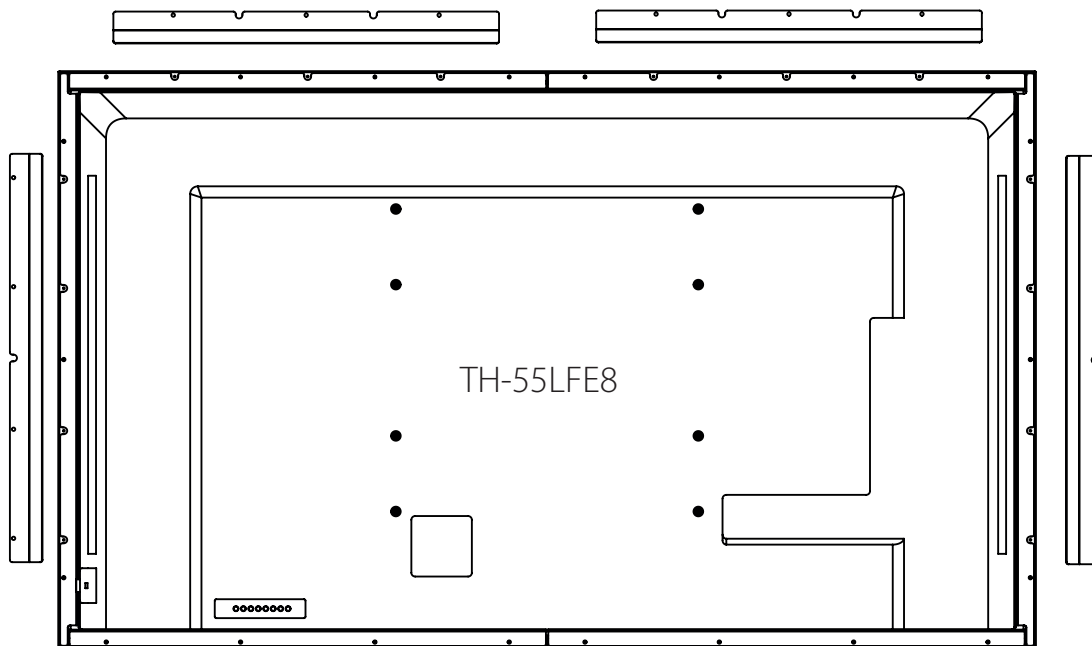
Attaching the touch overlay to a monitor

There is one monitor: TH-55LFE8. Follow the instructions below

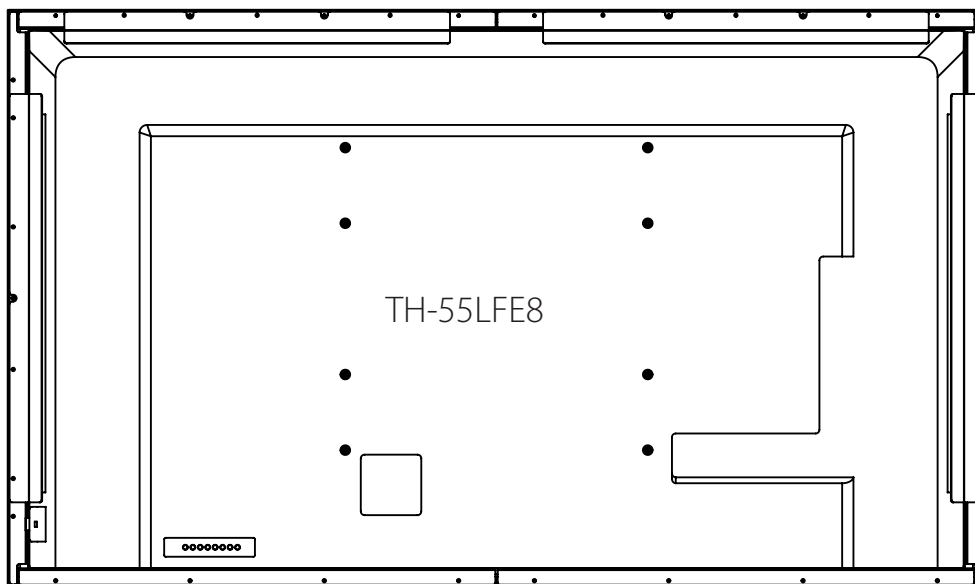
1. Lay down the touch overlay and ensures that you have the brackets.



2. Place the monitor gently in the Touch Overlay with 2 persons.



3. Attach all other brackets that hold the monitor in place with the screws.



Connecting Cables and Switching On

Connect the cables and switch on power in the following order:

1. Connect the video cable from the computer to the monitor.
2. Connect power to the monitor and switch on.
3. Connect power to the computer and switch on.

USB Installation

USB installations require no special software; the touch overlay communicates directly with the computer's operating system via the USB interface, just like a USB mouse.

Connect the USB cable from the touch overlay to the computer.

Once the cable is connected, the computer automatically detects the USB device (the touch overlay). This takes a few seconds.



(Note: the computer only displays the above message the first time you plug in the USB cable. The next time you plug in the cable, the computer will be already configured for the device.)

For USB communications, you do not need to install any software. However, an optional USB Configuration program is available that allows you to change the default operating parameters if required.

USB Calibration

1. Click Start and then Control Panel, and next Hardware and Sound.
2. Under Tablet PC Settings, tap Calibrate.
3. Follow the on-screen instruction to calibrate your touch screen.

There is also a calibration option in the touch service software.

Calibration notes

- When removing your finger, lift it straight off the screen, making sure you don't drag it across the screen.
- You can exit calibration mode by pressing the calibrate button again or by pressing the [Scroll Lock] key twice.
- Test the calibration by moving the mouse pointer around the screen checking that it closely follows your finger. If the calibration is not satisfactory, you can re-calibrate.

Operating the Touch Screen

Mouse actions

PresTop PT Touch Overlay provides full mouse functionality—click, drag, double-click and right-click.

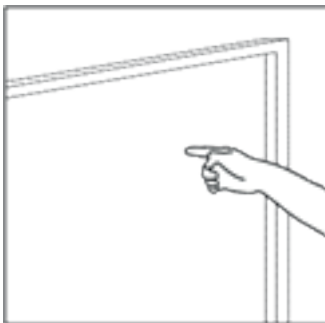
- Single click is performed by tapping your finger once on the screen.
- Double click is performed by tapping your finger twice on the screen in quick succession.
- Drag is performed by touching and moving your finger across the screen without lifting off.
- Right click is performed by touching and holding your finger in one position for a short time.

Operating notes

The touch screen does not require pressure to sense a touch.

For best results, point at roughly right angles to the screen and keep the rest of your hand clear of the glass.

When removing your finger, lift it straight off the screen, making sure you don't drag it across the screen.



Cleaning the Touch Screen

To clean the touch screen, use a lint-free, soft cloth dampened with standard, household glass cleaning solution as follows:

1. Spray a small amount of glass cleaner onto the cloth.
2. Wipe the glass of the touch screen to remove any dirt, dust, or finger marks.
3. Wipe the clear surfaces around the edges of the screen.
4. Remove any residual glass cleaner with a dry, soft, lint-free cloth.

WARNING:

Do not spray the cleaner directly onto the touch screen as this could leave residue on the infrared surfaces.

Do not use an abrasive cleaner or rough cloth as this could damage the infrared.

Troubleshooting

This section provides some solutions to possible problems that might occur with the touch screen.

If the problem persists, contact your PresTop product support provider for further advice.

Touch screen does not respond to touches

Make sure the communications cable (USB) is connected to the computer.

Make sure the touch screen is connected to a USB port that provides enough power for it (some peripherals, such as keyboards, include USB ports that do not provide sufficient power for certain devices). Try connecting the touch screen to a different USB port on the computer.

Cursor does not accurately follow your finger

This can occur if the touch overlay has not been calibrated correctly. To fix the problem, re-calibrate the touch overlay—see the relevant sections on calibration in this manual.

Unable to calibrate the touch overlay

If you have a problem with calibrating the touch overlay, contact your PresTop support provider for assistance.

The cursor moves erratically

Make sure there is nothing blocking the optics of the touch screen.

Clean the glass and edges of the screen. For instructions, see [Cleaning the Touch Screen](#) on page 7.

“USB not recognized” message appears on screen

To remedy, unplug the USB cable, then plug in the USB cable again. If this does not fix the problem, you may need to uninstall and reinstall the USB device. See the next section.

Some types of USB extenders and/or USB (booster) extension cables can cause problems.

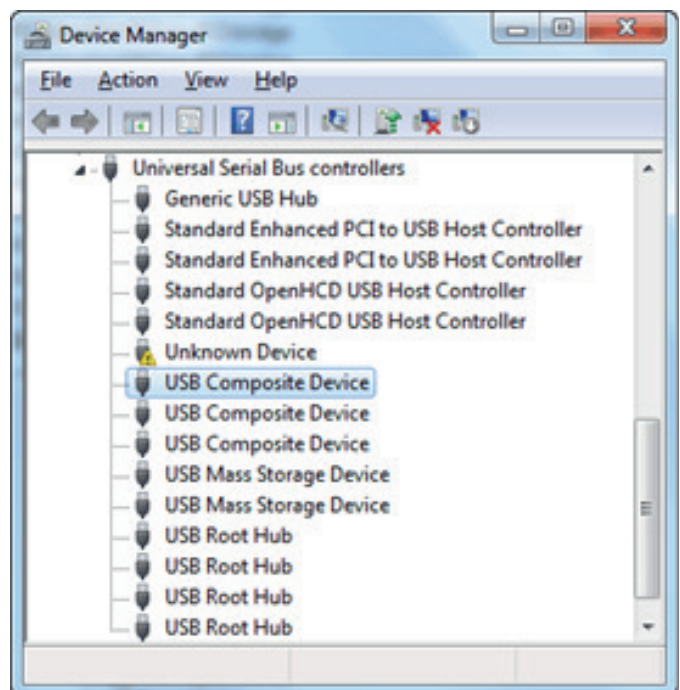
Connect the overlay without any extensions to the pc.

Sun and/or spot-light can affect the working of the touch.

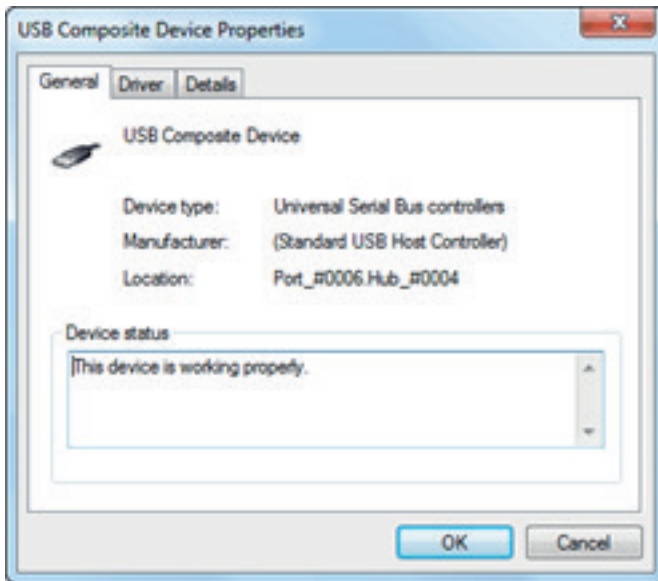
Shield the screen from the sun and/or spot-light.

Uninstalling and Reinstalling the USB Device

1. From the Start menu on Win 7, select:
Settings / Control Panel / System / Device Manager/Universal Serial Bus Controllers



2. Right click on [USB Composite Device] and choose [Properties].



3. On the Properties screen, verify that the location refers to the touch screen.
4. Close the Properties screen.
5. With USB Composite Device selected in the Device Manager list, press [Delete] on your keyboard. The computer displays the following dialog.



6. Click [OK] to confirm. This will remove the touch screen from the Hardware Device list. To reinstall the USB device, follow the instructions given in "USB Installation" on page 7.

FAQ

Support questions touch screens.

1. **Do I need to install a driver?**

No. The screen is HID. You don't have to use a driver.

2. **Can I use Windows Calibration?**

Yes. You can. If you meet calibration problem, we can send you software to fix it.

3. **The touch is not working?**

Did you connect the USB cable from the touch screen with your computer?

4. **What is length of the USB cable?**

If extended? How long? You can extend it max to 5 meters. We only support our own extender kit. For size $\leq 55"$, the length is 1.5m, size $> 55"$, the length is 2.1m.



5. **Filth on touch screen?**

Is there any dust, dirt or other substances on the screen of the monitor? Specially in the corners of the raised edge.

If dust. Clean it with compressed air. When using screen cleaner. Don't spray direct on the screen or in the corners! Spray on a cloth and then clean glass with cloth.

6. **Is there any direct sunlight or spots shining on the screen?**

We recommend not to use the screen in direct sunlight. We suggest to move the spots or translocate the monitor. Don't use the touch screen outdoors! Our sunlight resistance is 50,000 lux

7. Dual touch (2 touch points) is not working

Which Operating system are you using? Multi(dual)touch only works since Windows 7. Please take notion that multitouch requires specific software to enable the gestures, for example Omnitapps.com. Can you start up Paint und write with two fingers simultaneously. Do you see two stripes? Also, we suggest you to use standard operating system other than embedded system.

8. Multi user touch (10 touch points) is not working

Which Operating system are you using? Direct multi touch only works since Windows 7 or MAC OSX Lion (needs special driver). Please take notion that multi-touch requires specific software (applications) to enable the gestures, for example Omnitapps.com. Can you start up Paint und write with multiple fingers simultaneously. Do you see multiple stripes?

9. Does the touch work with Apple?

Yes. Our touch can work with Mac OS system.

If you do not want driver, screen can support single touch point

We can offer you the driver which can support multi touch gesture

For detailed info about multi touch gesture for Mac OS as below:

Gestures	Description	Driver Support?
Click	Single click, move	Support
Two-finger scroll	Two finger move up and down to watch	Support
Two-finger Swipe	Two finger move right and left to switch to different tasks.	Support
Tap to Zoom	Tap to zoom	Support
Pinch to Zoom	Pinch to zoom the pictures and rotate	Support
Three-finger Swipe	With 3 fingers to swipe to different pages	Support
Three-finger swipe to Mission Control	Three-finger swipe to Mission Control (it might different according to different Mac PC setting)	Support
5-finger disperse to back to desktop	It might need 5-fingers from two hand to disperse to back to the desktop	Support, you might need 5 fingers from 2 hands to operate

**Address: Ekkersrijt 4611
5692 DR Son en Breugel
The Netherlands
Tel: +31(0)499 367 606
Fax: +31(0)499 367 003**

www.prestopproducts.com